

# Advancing pain management in Swedish primary care through quality registry

–

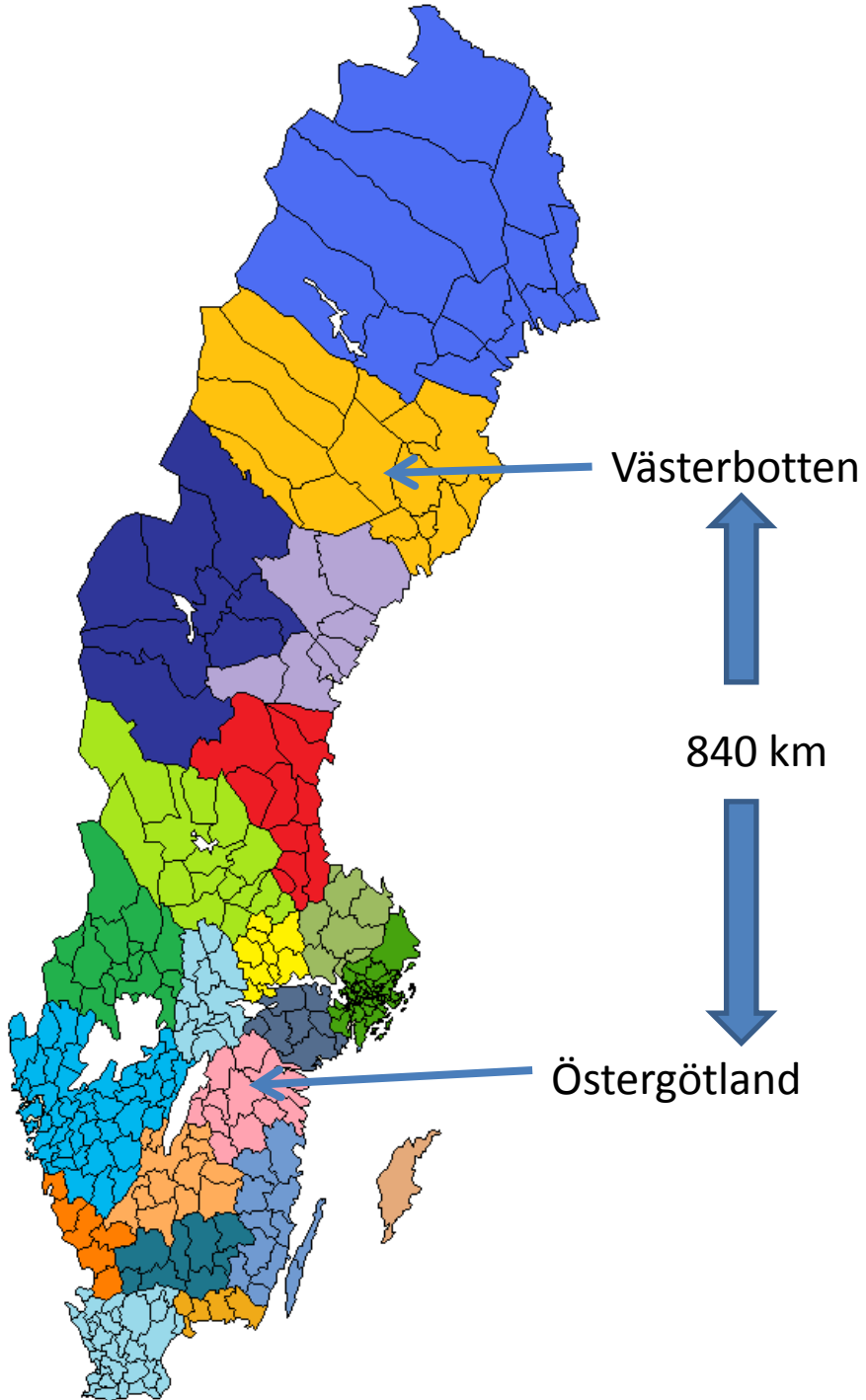
a regional collaboration project in Sweden

**Björn Gerdle**

and

**Britt-Marie Stålnacke**





**A regional collaboration project in Sweden**

# ***What is rehabilitation ?***

*(Gerdle & Elert 1999)*

## **Who might need rehabilitation ?**

Patients with chronic problems/symptoms

## **Different intensity levels of rehabilitation**

In the complex situation

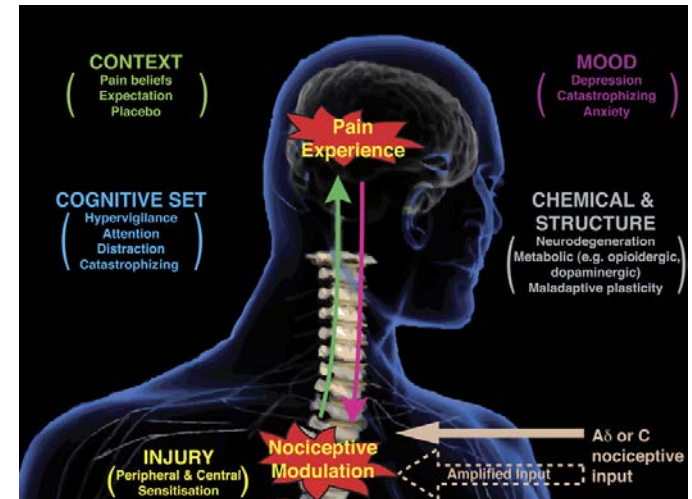
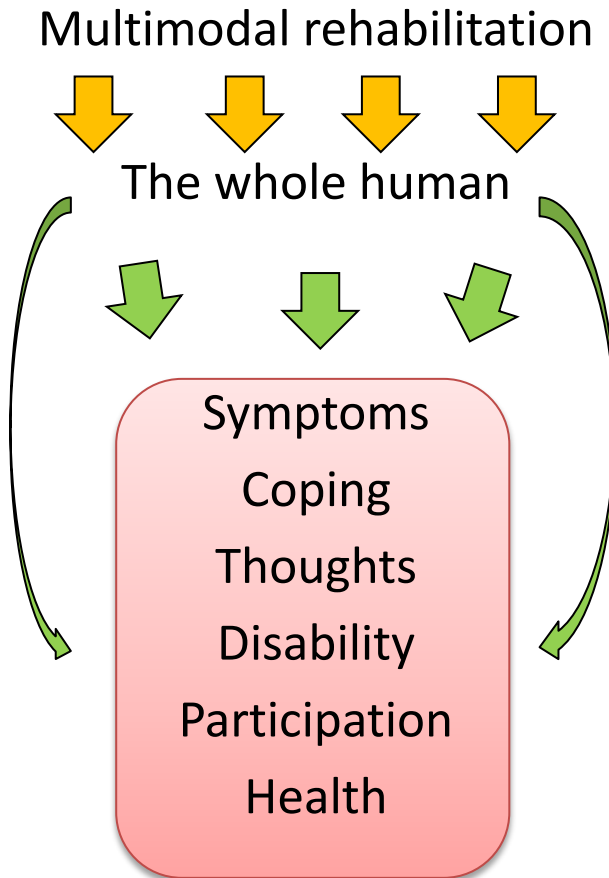


Several synchronized activities are needed over some weeks  
(often teambased)



***Multimodal rehabilitation***

# Multimodal rehabilitating - a complex intervention



(from Tracey & Mantyh 2007)

Pharmacological intervention



Biochemical process



Pain intensity



The Swedish Council on Technology Assessment in Health Care (SBU)

([www.sbu.se](http://www.sbu.se))

## Systematic reviews of multimodal rehabilitation in chronic pain

Multimodal rehabilitation is more effective than control situations or less intensive interventions (***Moderately Strong to Strong Evidence***)

**(SBU 2006 & 2010)**

Multimodal rehabilitation > TAU/WLC (***Strong evidence***)

**(Scascighini et al 2008)**



# the Swedish national rehabilitation guarantee

multimodal rehabilitation programmes



primary health care

all county councils in Sweden

# Problems

lack of

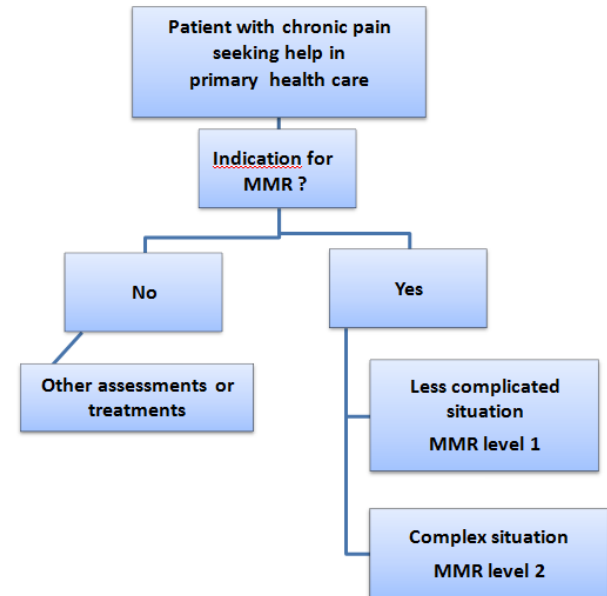
- clear and uniform strategies to identify patients with need for multimodal rehabilitation
  - Primary care
  - Specialist level
- simple and systematic routines to follow up and evaluate the results of multimodal rehabilitation in primary care

**The Swedish Quality Registry for  
Pain Rehabilitation (SQRP)**

# Aims

To develop an instrument for

I. selection to multimodal rehabilitation



II. evaluation of multimodal rehabilitation in primary care

“Short version of the SQRP”.

Swedish Quality Registry for Pain Rehabilitation (SQRP)