

**Second EFIC® Symposium
Societal Impact of Pain
May 3rd & 4th 2011, Brussels**



Societal impact of pain in a rehabilitation setting



**Roberto Casale, MD
Dept. of Clinical Neurophysiology &
Rehabilitation Pain Unit
Rehabilitation Institute of Montescano,
Foundation "Salvatore Maugeri", I.R.C.C.S.
Montescano, Italy**

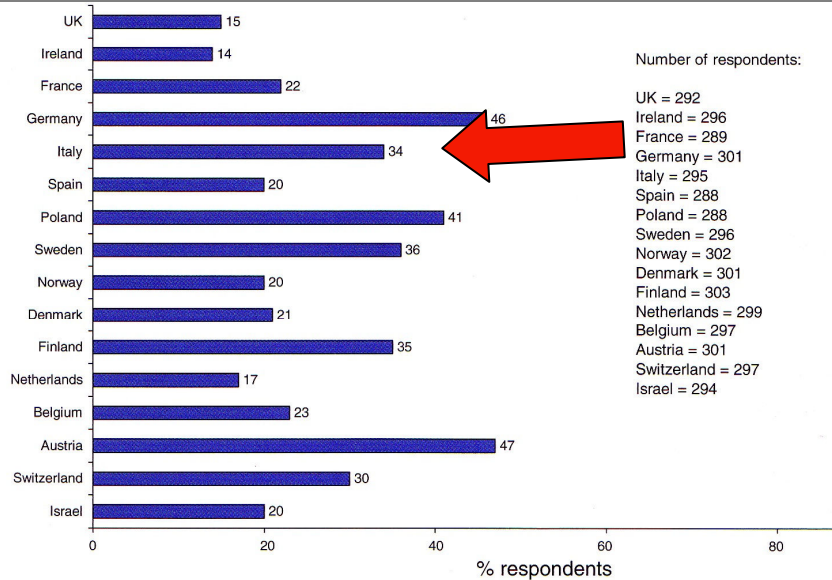


Fig. 19. Percentage of chronic pain sufferers who had tried massage for their pain in the 16 c

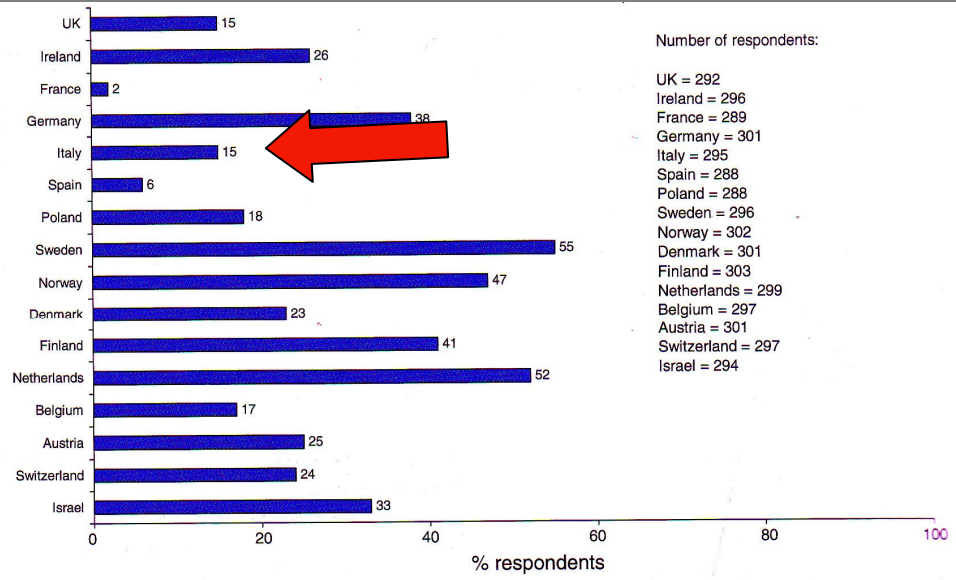


Fig. 18. Percentage of chronic pain sufferers who had tried physical therapy in the 16 countries.

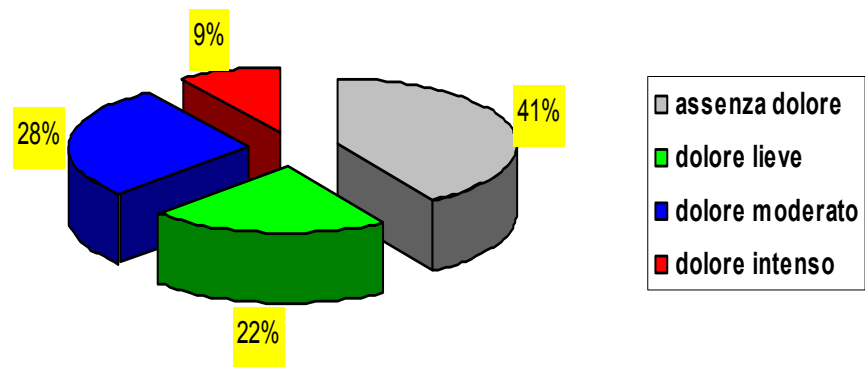
15 up to 34 % of chronic pain sufferers used physical therapies and/or rehabilitation facilities not always covered by the NHS or insurances

| | Colleagues Responded: |
|------------------|-----------------------|
| Very frequently | 29% |
| Moderately often | 38% |
| Infrequently | 26% |
| rarely | 7% |

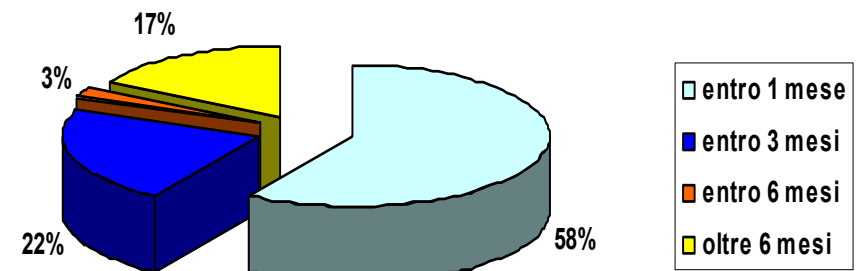
67%

Pain in a rehabilitation setting (Bettinardi, Maini, Casale 2010-2011)

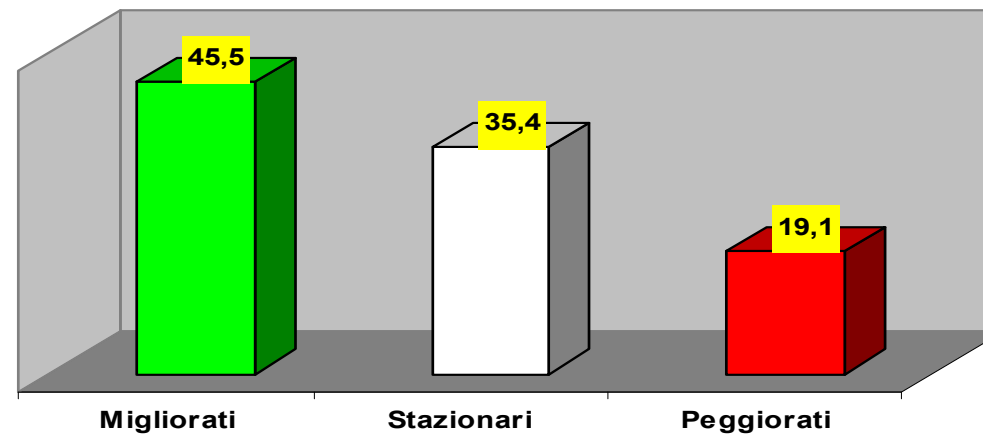
Incidenza dolore all'ingresso di 1477 pazienti ricoverati in riabilitazione



Durata dolore



Trend dolore di 1400 pazienti alla dimissione



Key messages

- We urge to consider the presence of chronic pain also in different settings from the “classical” pain centers.
- Chronic pain is always related to disability and the data herein reported are stressing this bi-directional relationship
- Pain control in a rehabilitation setting is optimistically inadequate and its contribution to the societal burden of pain-related disability is underestimated